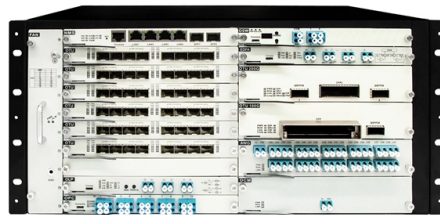


What does the L in cable tray represent



Overview

L stands for Live — the hot conductor carrying voltage from the electrical source to the device. In IEC (European/international) wiring, the L terminal is where you connect the hot wire. L must never be connected to a. The L-channel cable trays from LANZ are made of robust steel, with rounded shapes and with a halogen-free polyethylene coating in accordance with IEC 60754-1 / EN 50267-2-1 standards (RAL 7035). The L-channels are attached. The coating thickness is usually expressed in g/m². The most deployed type of Sendzimir steel is Z 275 = 275g/m² (weighed on both sides), this corresponds to 18-20 µm (micron). Sendzimir galvanized steel sourced from modern galvanizing lines has, in general, a uniform, shiny appearance. The mechanical and electrical characteristics, tests, certifications, overall quality management, recommendations mentioned in this technical guide only apply to our own cable management ranges and cannot under any circumstances be transposed to si osure, overheating or. Cablofil's Wiremesh Cable Tray concept is based on performance, safety, and economy. These three qualities make the Cablofil Wiremesh Cable Tray system preferred by installersThe answer is affirmative, provided that the correct type of tray cable is selected.

Article Content

THOMAS & BETTS CABLE TRAY SYSTEMS

The Benefits of Cable Tray Cable tray wiring systems offer significant advantages over conduit pipe and other wiring systems. Cable tray is less expensive, more reliable, more adaptable to changing needs

CATALOG Cable Tray Cable tray systems

CABLE TRAY SYSTEMS Cable tray wiring systems offer significant advantages over conduit pipe and other wiring systems. Cable tray is less expensive, more reliable, more adaptable to changing needs

All About Tray Cable

Is tray cable direct burial? Yes, all tray cable is rated for direct burial installation. How many conductors are in tray cable? Tray cable has at least 2

Wire Basket Overhead Cable Tray Routing System Application Guide

The Wire Basket Overhead Cable Tray Routing System is composed of pathways, splices, mounting brackets, and accessories that allow the system to be configured for a wide range of applications and

Guide to cable support systems

A cable support system consists of cable support lengths and system components, such as cable support fittings, support elements, mounting elements and system accessories. The cable support

Cable Tray Selection Process

Cable tray materials may not respond the same way in different environments. Chemicals or combinations of chemicals have corrosion effects on some materials that can be compounded by

Cable Tray L-Joint | Trayco

Characteristic of this steel type is that - prior to mechanical deformation - it is

Decoding Symbols: What Does L Mean In Electrical

What Does L Mean In Electrical Wiring: Decode the mystery: Understand the symbols and enhance your electrical knowledge.

POWER CABLE INSTALLATION GUIDE

POWER CABLE INSTALLATION GUIDE Cables installed into conduits or trays have installation parameters such as maximum pulling tensions, sidewall pressure, clearance, and jamming, which

What Do N And L Mean In Electrical Wiring? | Brea

L stands for Live — the hot conductor carrying voltage from the electrical source to the device. In IEC (European/international) wiring, the L terminal is where you

Understanding IEC 61537: A Comprehensive Guide to

Span (L): The distance between two supports, denoted as “3.” Local Weak Points: Identified as “4,” these are areas prone to deformation or failure.

cs-178-project/imdb.vocab at main · apmalani/cs-178-project

Contribute to apmalani/cs-178-project development by creating an account on GitHub.

IEEE 525-2007_accepted

IEEE-SA Standards Board Abstract: The design, installation, and protection of wire and cable systems in substations are covered in this guide, with the objective of minimizing cable failures and their

Cable Tray Design and Sizing Guide

The document discusses key factors to consider when designing a cable tray system, including: 1) Determining the appropriate width and height of the tray

Modeling cable tray vertically

Modeling cable tray vertically Model a cable tray vertically on a wall - Exercise Open the Small Medical Center-Cable Tray Vertical.rvt project. You are in the in the 01

Interpreting L-3 Communications Cable/Harness Drawings

This document provides information about those aspects of cable/harness drawing format and nomenclature that may be specific to L3. This document is broken into several sections that discuss

Tray Cable Size Chart: Choosing the Right Gauge

In this guide, we walk through what tray cables are, the meaning of AWG sizes, a detailed tray cable size chart, key factors in selecting the right gauge, common tray cable types and

MP Husky Cable Tray Systems Technical Catalog

Ladder consists of two longitudinal side members connected by individual traverse members. It is intended for use primarily for power cable or control cable

Cable Tray Design and Sizing Guide | PDF

The document discusses several key factors to consider when designing a cable tray system, including: 1) The width and height of the tray, type of tray bottom (ladder, ventilated, or solid), and type of

such/ignore.txt at main · yeerma/such · GitHub

aasdadasada. Contribute to yeerma/such development by creating an account on GitHub.

How to Read Tray Cable Markings and Labels?

Only tray cables labeled “Sunlight Resistant” or with a “SUN RES” or equivalent UV protection marking are certified for exposed installations. Standard tray cables without this rating will

L-Com Electro Zinc Plated Wire Mesh Cable Tray L

The L-com LC-LWB200 L-shaped wall bracket offers a perfect way for mounting and securing the wire mesh cable tray to the wall. The electro zinc-plated wire

Kable Kontrol L Type Bracket - 6” Width

These wire mesh cable trays suspend cables and ensure that your important wires and cables are safely organized and out of your way. The design of these cable

GUIDE CABLE TRAYS TECHNICAL

In accordance with its continuous improvement policy, Legrand reserves the right to change the specifications and illustrations without notice. All illustrations, descriptions and technical information

Fas Support L Bracket-Painted (2D,4W,6L) | Wire Mesh Trays | Cable

Cablofil's Wiremesh Cable Tray concept is based on performance, safety, and economy. These three qualities make the Cablofil Wiremesh Cable Tray system preferred by installers.

What are the main types of cable tray?

Introduce the main types of cable tray including ladder cable tray, perforated cable tray, solid bottom cable tray and wire mesh cable tray.

L-channels

L-channels are used for cost-effective cable routing in steel construction. The L-channels are attached to steel supports and steel beams with clamps. The joints of the supports and beams are bypassed with

Best Practice Guide to Cable Ladder and Cable Tray Systems

This guide covers cable ladder systems, cable tray systems, channel support systems and associated supports intended for the support and accommodation of cables and possibly other electrical

Understanding IEC 61537: A Comprehensive Guide to

IEC 61537 is a crucial international standard established by the International Electrotechnical Commission (IEC). The Chinese national standard GB/T 21762

Beama Best Practice Guide | Installation Of The System | Cable ...

The following recommendations are intended to be a practical guide to ensure the safe and proper installation of cable ladder and cable tray systems and channel support and other support systems.

Contact Us

For more information, pricing, or custom solutions, please contact us:

Website: <https://www.boxesgaramella-andria.it>

Email: sales@boxesgaramella-andria.it

Phone: +39 331 584 7291

Address: Via delle Industrie, 15, 20154 Milano, Italy

This document is for informational purposes only. Specifications subject to change without notice.

