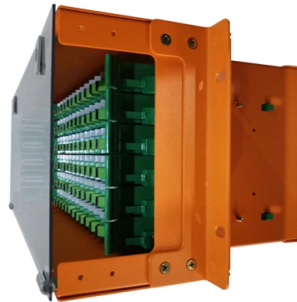


Standard for gaps in explosion-proof distribution boxes



Overview

The standards specify that for flanged joints 'there shall be no intentional gap between the surfaces', and gives the maximum permitted average roughness of the surfaces (6. Robots can camouflage and live with fish Structural requirements for explosion-proof distribution boxes: 1. The outer surface of the Distribution Box shell is coated with silver-gray powder paint. These. Ex Industries (exindustries) is a global supplier of advanced hazardous area solutions, offering a wide portfolio of certified products including explosion proof electrical boxes, explosion proof junction boxes, explosion proof lighting, intrinsically safe barrier systems, explosion proof cables. Typical materials used for the construction of flameproof equipment include cast iron and aluminium alloys. Plastic materials are also used but the free internal volume must not exceed 10cm³. Lamps, circuits and sparking devices are contained within flameproof enclosure. Joints on covers or openings are protected by the 'flamepath'.

Article Content

Technical Specification for Explosion Proof Cabinets: A Guide

Compliance with essential regulatory standards and certifications is non-negotiable for explosion proof distribution cabinets. These standards provide a framework for electrical safety in

Energy Distribution

BARTEC offers one of the most extensive ranges of explosion-proof and substance-resistant components, devices, and systems for controlling, switching, and

Principle and applicable area of explosion-proof distribution box

Because when explosion-proof distribution boxes are properly specified, installed, and maintained, they become invisible guardians. They represent the quiet professionalism of engineers

Basics of Explosion Protection 2 3 6 5

Secondary Explosion Protection If the danger of explosions cannot be completely or only partly e ignition of an explosive atmosphere. The hazardous locations are therefore devided into zones, according to

Principles for Connecting Explosion-Proof Distribution

Explosion-proof systems, especially in hazardous environments, demand a meticulous approach to ensure safety and compliance with regulations. This

Chapter 12 Ex Protection Concepts

The equipment of Ex terminal boxes with terminals and cable screw-connections is subject to defined limits. It depends on the minimum gaps between the current carrying metal components of the

Explosion Proof Illumination Distribution Boxes (With

Flameproof and explosion proof, these power overhaul distribution boxes are suitable for use in hazardous areas. Specs: Ex mark: Ex de IIC T4 Gb DIP A21

Nagaland News, India News, Northeast News

The Morung Express brings the Latest News, Top Breaking headlines on Politics and Current Affairs in Nagaland India and around the

Explosion Proof Basics on Flameproof Construction

Gaps will inevitably exist due to manufacturing methods, tolerances and economics, and these gaps but must not exceed the dimensions specified

Structural requirements of explosion-proof distribution box and ...

The insulation level of the insulation material in the junction box of the explosion-proof distribution box is not less than 6mm, and the creepage distance is not less than 10mm.

ESP Junction & Terminal boxes

Polyester distribution boxes have been of great advantage in many industrial plants. They offer safe protection even when they are exposed to extreme

Special requirements for cable laying and distribution box installation ...

Working in potentially explosive environments means every component of your electrical system becomes a potential spark that could ignite disaster. It's not just about compliance - it's about

Explosion Proof Distribution Box: Glands vs Conduit for Safety

Choosing how cables enter an explosion-proof distribution box is one of those decisions that looks straightforward on paper but gets complicated fast once you factor...

Explosion-Proof Control & Distribution Boxes

The MAMX02/03 Series Explosion-Proof Control and Distribution Boxes are engineered to deliver advanced protection and long-term

Wiring Specifications for Explosion-Proof Distribution

6. Grounding of Metal Cabinets: Metal explosion-proof distribution boxes must be reliably grounded, with the grounding wire connected to the

Technical Specification for Explosion Proof Cabinets: A Guide

Developing a precise technical specification for explosion proof cabinets is fundamental for safety and operational integrity in hazardous environments. These specifications dictate the

Requirements And Specifications For Installation Of

A leakage protector should be installed in the distribution box to provide additional safety protection. Installation requirements in special

Explosion Proof Enclosures for Hazardous Zones

Every Explosion Proof Enclosure, intrinsically safe barrier, junction box or any other containment enclosure should comply with the standards outlined by NEC

Explosion Proof Enclosures | Complete Hazardous

Learn everything about explosion proof enclosures for hazardous areas—design, certification, and industrial applications with ATEX, IECEx, and Class I Div

Explosion Proof Power Distribution Boxes

Flameproof and explosion proof, these power overhaul distribution boxes are suitable for use in hazardous areas. Specs: Ex mark: Ex de IIC T4 Gb DIP A21

Explosion Proof Enclosures | Complete Hazardous

Explosion Proof Enclosures & Hazardous Area Equipment - Complete Industrial Guide
Introduction Industries operating in explosive atmospheres require

Code of Practice for Operating Explosion-Proof Power

When replacing, repairing, or adjusting electrical devices, it's essential to reassess the classification of hazardous areas or changes in

Explosion-Proof Distribution Boxes: Special Installation Requirements

Unlike standard distribution boxes that could become shrapnel shards in volatile environments, explosion-proof containers are engineered fortresses that absorb, contain, and vent

Terminal and Junction Boxes (Ex e, Ex i, Ex op) | Explosion Protection

A wide selection of terminal types, cable glands, and accessories allows for full customization of terminal boxes and junction boxes according to specific project requirements in hazardous areas.

Explosion proof distribution box standards and installation issues ...

All components and technical parameters need to comply with the national standard GB7251 design requirements, sample production needs to be notified to the construction unit, supervision,

Inspection and Maintenance of Explosion-Proof Equipment

During the maintenance of explosion-proof junction box, check the proper fastening and tightening of high-tensile strength (HTS) bolts. If such bolt is missing, it should be replaced with

Explosion Proof Enclosure Comprehensive Guide

Explosion-Proof Distribution box: These smaller components are structurally similar to distribution cabinets. You can use these for the distribution

Top 3 Facts About Explosion Proof Distribution Box & Electrical

Image Source: pexels Explosion proof distribution boxes and electrical enclosures are critical components for ensuring safety in hazardous environments. They are designed to contain

Contact Us

For more information, pricing, or custom solutions, please contact us:

Website: <https://www.boxesgaramella-andria.it>

Email: sales@boxesgaramella-andria.it

Phone: +39 331 584 7291

Address: Via delle Industrie, 15, 20154 Milano, Italy

This document is for informational purposes only. Specifications subject to change without notice.

