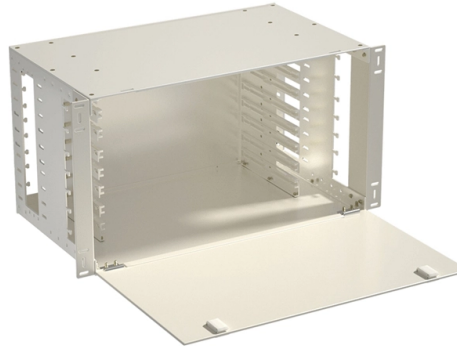


Standard IP45 size of distribution box



Overview

It describes HA, HK, and LGD series boxes with dimensions ranging from 100-415mm in length, 105-323mm in width, and 75-140mm in height. The IEC has developed the ingress protection (IP) ratings, which grade the resistance of an enclosure against the intrusion of dust or liquids. Electric and electronic equipment deteriorate or malfunction when water or dust enters the device. Area boxes can be installed in technical flooring or in false ceilings. 6. Introducing the MY0224 IP45-rated 3-phase distribution box - a robust, DIN rail-mounted TPN MCB panel designed for safe and efficient power circuit protection in residential, commercial, and industrial electrical systems. Constructed from high-impact resistant thermoplastic (PC+ABS blend), this. Typical wall-mount enclosure sizes often range from about 200 × 200 × 120 mm up to 800 × 600 × 300 mm. Before talking numbers, let's clarify what "size" really means.



Article Content

Metal electrical distribution box with IP65 protection for

Size (height x width x depth): 500 x 300 x 200 mm. Distribution box made of 1.2mm thick steel and painted in RAL 7035 gray. 2mm thick galvanized steel sheet for

IP45 Enclosure Guide: Specs, Costs, and Real-World Use

This guide takes a buyer-focused look at the IP45 metal enclosure —what it means, where it makes sense, what can go wrong, and how to choose

Distribution Box

Our distribution boxes are perfect for industrial environments, catering to automation, robotics, and processing facilities. They provide cost-effective solutions through automated dispensing and

Outdoor Electrical Distribution Box Specifications: NEC

Complete specification guide for outdoor electrical distribution boxes covering NEC Article 312 requirements, NEMA ratings, sizing calculations, and

Area distribution boxes with connectors

Area boxes can be installed in technical flooring or in false ceilings. Area boxes are offered in Cat. 5e, Cat. 6, Cat 6A, and should be selected according to the size of the network.

Distribution Boards & Consumer Units

Distribution boards, together with modular ABB system pro M Compact protection devices and Modular Din Rail Components, can be used for many applications in electrical building installation. Solutions

TECHNICAL SPECIFICATION FOR OUTDOOR TYPE DISTRIBUTION FEEDER PILLAR BOX

1. Scope: This specification covers technical requirements of design, manufacture, testing at manufacturer's works, packing, forwarding, supply and unloading at store/site and performance of

IP45 type size of distribution box 3 phase 4 6 8 10 way din rail type ...

About IP45 3 Phase Distribution Box This product belongs to the Electronics & Instrument Enclosures category, specifically engineered for secure housing of low-voltage electrical components such as

Standard Electrical Enclosure Sizes: Chart, Dimensions

Electrical enclosure sizes are not universal, but most manufacturers follow common size families. This guide explains typical wall-mount and floor

Himel Metal Enclosure Distribution Box Brochure Sep 2023

Metal Clad Distribution Box & IP54 Metal Enclosures Reliable, affordable accessible
Metal Clad Distribution Box Product features • Easy installation design with cable entry from top, bottom & back •

Distribution Box

Metal Distribution Box Features Continuously welded seams Foam-in-place seamless gasket 120-degree opening heavy-duty industrial hinges IP66 protection rating against dust and water according

Design requirements and standards for low voltage

Key Takeaways Always prioritize safety by following NEC and IEC standards for low voltage distribution boxes. Check voltage and current ratings

TECHNICAL SPECIFICATION FOR OUTDOOR TYPE DISTRIBUTION

manufacturer's works, packing, forwarding, supply and unloading at store/site and performance of Plot & Service junction box with all accessories for trouble free and efficient operation. This outdoor Plot &

Distribution Boards & Consumer Units

Clear detailed description of each size and easy to select with the ordering codes. Box with four studs and adjustable nuts for easy fit / easy remove of pan assembly. Generous wiring space. Easy fit of

IP Ratings for Electrical Enclosures Explained

Here's a chart to help you select the right IP rating. Not protected from liquids.

Distribution box | PDF

This document provides specifications for various types of plastic distribution boxes, including their dimensions and features. It describes HA, HK, and LGD series

IDE Electric

Polycarbonate version. Halogen-free plastic materials. Base and frame: PC RAL 7035 grey. Transparent window: Recommended for outdoor use: UV protection according to the ISO 4892-2 standard,

Electrical Enclosure Box Sizes and Selection Tips

Explore standard electrical enclosure box sizes, learn how IP ratings and materials affect design, and calculate the right dimensions for your project.

Electrical Control Panels & Distribution Boxes: Sizes,

Learn about control panels, breaker boxes, junction boxes, and custom enclosures. Explore standard panel sizes, applications, and key

IP45 type size of distribution box 3 phase 4 6 8 10 way din rail type ...

Introducing the MY0224 IP45-rated 3-phase distribution box – a robust, DIN rail-mounted TPN MCB panel designed for safe and efficient power circuit protection in residential, commercial, and industrial

A comprehensive understanding of distribution box

At Timelec, we provide customized, high-quality distribution boxes that meet international safety standards, with a strong focus on durability,

Area distribution boxes with connectors

The boxes connect to the patch panel or enclosure by a maximum of 6 or 12 links. Area boxes can be installed in technical flooring or in false ceilings. Area boxes are offered in Cat. 5e, Cat. 6, Cat 6A,

How th Choose the Right Distribution Box?

Find out how to choose the right distribution box for your needs! Learn about sizing, safety standards, essential features, and all factors.

Contact Us

For more information, pricing, or custom solutions, please contact us:

Website: <https://www.boxesgaramella-andria.it>

Email: sales@boxesgaramella-andria.it

Phone: +39 331 584 7291

Address: Via delle Industrie, 15, 20154 Milano, Italy

This document is for informational purposes only. Specifications subject to change without notice.

