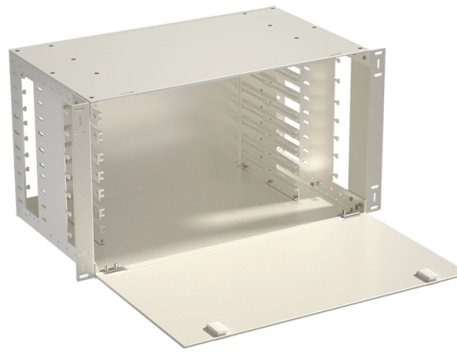


# Installation steps for horizontal tee cable trays



## Overview

Spring knot is used to connect cable tray or trunking to channel. Approved and correct fittings are used. Cable tray system design shall comply with National Electrical Code® (NEC® ) Article 392, NEMA VE 1, and NEMA FG 1 and follow safe work practices as described in NFPA 70E. Further, it is recommended that installers follow all guidelines and best practices found in NEMA VE 2. maintain spacing or to keep cables in place when the tray is ect the minimum bend ra-dius for cables as they exit the bottom of the cable tray. A rung spacing of 6 to 9 inches (150 to 230 mm) is preferable when the cable tray cont d for instrumentation and control applications that require. When offloading tray from a flat deck trailer using an overhead crane, care should be exercised in the placement and length of the slings to prevent crushing the product (siderails). Only. The flexible horizontal adjustable splice plates are designed to allow for horizontal direction changes when standard horizontal fittings do not conform. These splices require supports within 24" (600mm) on. But before you lay the first tray or clamp down a single cable, you need a solid plan. This guide breaks down the process step by step. Mark the cable tray route based on your electrical cable tray design and site. This publication is intended as a practical guide for the proper and safe\* installation of cable ladder systems, cable tray systems, channel support systems and associated supports.

## Article Content

### Best Practices for Installing Cables in Trays

Learn the best practices for installing cables in trays. This guide covers essential steps, technical requirements, and key details for efficient cable

### Installation Of Cable In Cable Trays: NEC, Safety

Installation of Cable in Cable Trays ensures proper routing, cable management, NEC compliance, grounding, fire safety, and load capacity.

### Cable Tray Installation

Learn everything about cable tray installation with our complete guide. Discover types, steps, and safety tips for efficient electrical cable management.

### METHOD STATEMENT FOR CABLE TRAY INSTALLATION

7.1.7 Install necessary fabricated supports for cable tray as per installation detail. All permanent materials (including fabricated supports), consumables, construction area and resources shall be

### INSTALLATION GUIDE

To ensure that the complete ladder tray wiring system performs as designed, it is important that it is properly installed. Personal injury as well as property damage will result if proper installation and

### Cable Tray Trunking & Ladder Installation Method for

The purpose of this article is to define the sequence and methodology for the installation of electrical cable trays, cable trunking, cable raceways and boxes,

### How to install Cable Trays - Best Guide in 2026

Step-by-step on-site guide: learn how to plan, mark, support, and install cable trays correctly, from shop drawing approval to final checks.

### Best practice guide to cable ladder and cable tray

Cable ladder and cable tray systems The following recommendations are intended to be a practical guide to ensure the safe and proper installation of

### Cable Tray Installation Method Statement

Below is the detailed cable tray installation method statement not only for cable tray but also applicable for GI ladder and trunking for indoor and outdoor applications

### Cable Tray Installation Procedure Guide

The document outlines the procedure for installing cable trays, including essential tools, equipment, and safety measures. It emphasizes the importance of

Mastering Cable Tray Installation | Step-by-Step Guide for a Seamless ...

Learn how to install cable trays correctly. Get the ultimate step-by-step guide on setting up a seamless and reliable cable management system.

Cable Tray Technical Guide A practical guide to product selection and ...

A practical guide to product selection and installation This guide for engineers and installers has been developed by ABB as a practical reference regarding cable tray characteristics, installation, and

Instrumentation Cable Tray Installation Checklist and

Step-by-step instrumentation cable tray installation guide with safety tips, standards, inspections, and downloadable Excel checklist.

Best Practice Guide to Cable Ladder and Cable Tray Systems

This publication is intended as a practical guide for the proper and safe\* installation of cable ladder systems, cable tray systems, channel support systems and associated supports.

Wire Basket Tray System

Each tray section should be bonded to an adjoining section using listed bonding jumpers or a continuous ground wire and clamps (such as a copper ground bolt). Powder coated tray requires the removal of

DIY Installation: Mastering Light Duty Cable Tray Setup

Explore our comprehensive DIY guide to master the installation of light-duty cable trays. From planning to cable organization, follow step-by-step instructions for a tidy and efficient cable

Method Statement for Installation of Cable Tray or

On completion of cable tray/ ladder installation including fittings, inspect exposed finish. Remove burrs & construction debris and repair damages

Flexible horizontal adjustable splice plate instructions

The flexible horizontal adjustable splice plates are designed to allow for horizontal direction changes when standard horizontal fittings do not conform. The splices are furnished in pairs and include

Kable Kontrol Cable Tray tees and x junction instructions

## Tees and X Junctions Wire Mesh Cable Tray Reducer and Tee Junction Instructions CABLE TRAY CUTTING & BENDING GUIDES CONFIGURING CABLE TRAYS FOR INSTALLATION Horizontal Tees

### Cable Tray Installation

Whether you're building a commercial setup or upgrading an industrial plant, proper cable tray installation ensures neat wiring, safe access, and easy maintenance. But before you lay the first

Cable Tray Technical Guide A practical guide to product selection and ...

Cable tray length is selected based on the load to be supported, the distance between the supports (also referred to as the span), and handling and installation constraints.

### CABLE TRAY INSTALLATION PROCEDURE

5. Cable tray installation shall preferably be installed flat in buildings or operating structures. Tray shall run as far as possible under flooring and

## Contact Us

For more information, pricing, or custom solutions, please contact us:

Website: <https://www.boxesgaramella-andria.it>

Email: [sales@boxesgaramella-andria.it](mailto:sales@boxesgaramella-andria.it)

Phone: +39 331 584 7291

Address: Via delle Industrie, 15, 20154 Milano, Italy

This document is for informational purposes only. Specifications subject to change without notice.

