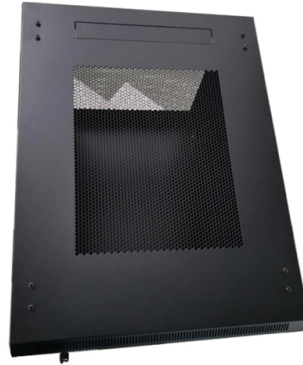


# Incoming cable specifications for the main distribution box



## Overview

Maximum incoming cable size: 300mm<sup>2</sup> 4 Core waveform. Always trim to size and place the PVC grommets over the cable ends before dressing the cores. The wide range of distribution boards enables each customer to select an individual and economical. BAHRA Load Centers are used for safe and reliable distribution of electrical power for indoor application in residential and commercial buildings. The terminals shall be serial numbered to facilitate installation and maintenance. This guide covers split load vs dual RCD vs RCBO board configurations, circuit arrangement and allocation, BS 7671 labelling requirements, type testing under BS EN 61439, SPD installation, wiring best practice, and the common. When installing an SMDB the unit needs to be a minimum of 400mm from floor level (with the duct lining up with the cable entry). The electrical or MEP project manager is overall responsible for.

## Article Content

Home Distribution DB Box Wiring Connection Diagram | DB box wiring |

How to safely connect incoming and outgoing cables to the DB box. The importance of earthing and neutral connections.

I N D E X [ ]

The current transformers for instruments metering shall be mounted on the disconnecting type terminal blocks. No direct connection of incoming or outgoing cables to internal components of the distribution

TECHNICAL SPECIFICATIONS FOR A. C. DISTRIBUTION BOARD

Control cables for external connections shall consist of stranded copper wire with 1.5, 2.5, 4.0 sq. mm or higher cross-sectional areas and shall enter from the bottom.

31-SDMS-07C

SPECIFICATIONS FOR LOW VOLTAGE DISTRIBUTION PANEL WITH ALUMINUM BUS BAR, MAIN CIRCUIT BREAKER AND 300A OUTGOING MCCBs. This document contains proprietary

Basic knowledge of distribution cabinet and distribution box

Incoming cabinet Function: the main function is to distribute electricity. The incoming cabinet is generally equipped with vacuum circuit breaker for disconnection. The

DISTRIBUTION BOARDS CATALOG

LOAD CENTER BOX WRAPPER SPECIFICATIONS The Load Center is provided with ample easy to remove knockout features in the box wrapper and gland plate. That helps in easy installation of

Distribution Boards & Consumer Units

Mini Center Compact is a reliable range of distribution boards allowing maximum flexibility, offering wide choice of incomers: Switch Disconnecter, MCCB, MCB, RCCB, RCD or Direct Cable Connection.

Electrical Installation Method Statement for MDB and MCC

Below is a precise electrical installation method statement that covers installation of main distribution board and MCC panel board in compliance with the approved design, drawings, manufacturer

TECHNICAL SPECIFICATIONS FOR A. C. DISTRIBUTION BOARD

The removable gland plate should be provided in the lower portion of the box to accommodate all brass glands (according to requirement) for incoming and outgoing cables.

## TECHNICAL SPECIFICATION FOR

The batteries shall be located in a battery room and connected to the distribution boards and battery charger located in an adjacent room via a fuse box located in the battery room.

### Cable Size Calculations for DBs

This document summarizes cable calculations for four circuits: 1) A main cable from the WWTP MCC to a new distribution board, selecting a 1C x 630 mm<sup>2</sup> copper cable. 2) A cable from the new

### Distribution Box: Types and Functions | Axis-Electricals

A distribution box houses all the contact breakers, earth leakage units, doorbells, and timers. The electrical power supply comes from the network to the building

### Distribution Board Wiring Guide | Consumer Unit Layout

A distribution board (commonly called a consumer unit in domestic installations) is the central point where the incoming electrical supply is split into individual circuits that serve different

## TECHNICAL SPECIFICATION I.R.O. 63,100,160 & 315 KVA

Distribution Boxes shall have Isolator (Switch Disconnecter) on incoming circuit and Porcelain CUTOFF fuse base disconnecter on outgoing circuits with necessary interconnecting Bus Bars.

### LV Sub Mains Distribution Board (SMDB)

Following a process of gradually coaxing the cable into position observing the correct bend radius for the chosen section, mark on the cable outer sheath the point up to which it needs to be removed, usually

## AC POWER DISTRIBUTION SWITCH BOARD

This also includes design, supply, laying and termination of PVC insulated armoured power and control cables required for distribution of AC auxiliary power at different points of switchyard, control room

### Microsoft Word

Each main distribution board and branch distribution board shall be controlled by an incoming circuit breaker/linked switch with fuse. Each outgoing circuit shall be controlled by a circuit breaker/switch

## DISTRIBUTION BOARDS CATALOG

Sufficient knockout features in box wrapper and gland plate ensure easy routing of cables. Easy to remove knockouts and gland plate with easily breakable features reduce installation time.

## TECHNICAL SPECIFICATION FOR LT DISTRIBUTION BOX

1.1 The Box shall have double door with self locking ( When the main MCCB is in close position the inner door can not be opened and after closing of the inner door only the main MCCB can be closed)

### Guide to Commercial Installations Distribution Boards & Panelboards

Not only does this cable entry system meet the requirements of the regulations, but it also cuts the time taken to fit the board to trunking by up to four times.

### Distribution Box Wiring Steps

Wiring and Binding Wiring Direction: Wiring between the main circuit breaker and each branch circuit breaker in the box generally goes on the left,

### Distribution Boxes: Types and Functions

A distribution boxes acts as the load center and main distributor of electrical power within a building. Also called a distribution board, panel board,

### Main Distribution Box

The Main Distribution Box (MDB) is the heart of the Global IFS Cable System Modular Wiring System. It provides power to the Floor Electric Modules and/or

### Technical Specification for

3mm metallic, removable type & split type in two parts, with 1no. 90 mm diameter knocks out punch/hole in the centre (For double cable boxes, Un-drilled gland plate to be supplied.

### How to Install a Cable Distribution Box Safely and

In modern electrical systems, cable distribution boxes (also known as electrical distribution boxes or distribution boxes) play a crucial role as the key

## Contact Us

For more information, pricing, or custom solutions, please contact us:

Website: <https://www.boxesgaramella-andria.it>

Email: [sales@boxesgaramella-andria.it](mailto:sales@boxesgaramella-andria.it)

Phone: +39 331 584 7291

Address: Via delle Industrie, 15, 20154 Milano, Italy

This document is for informational purposes only. Specifications subject to change without notice.

