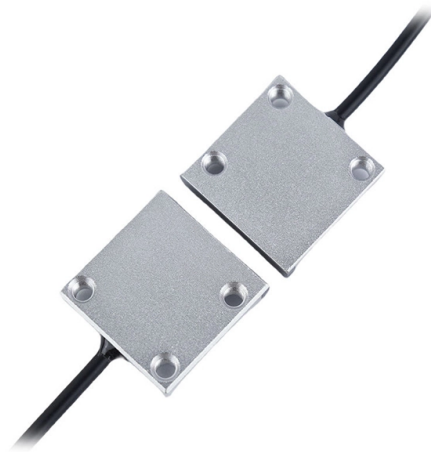


# Enterprise power distribution box obstruction



## Overview

Check the electrical load and ensure that the sensors do not exceed the 10 Amp maximum. This section concentrates upon commonly used power distribution equipment: Panelboards, Switchboards, Low-Voltage Motor Control. In modern power systems, distribution boxes are the core equipment for power distribution and control, and their stable operation is crucial to ensuring the safety and reliability of power supply. However, in actual applications, distribution boxes often encounter a series of problems, which not. Nijsha Enterprise is a leading manufacturer of high-quality power distribution boxes. Our boxes are designed to provide reliable and efficient distribution of electrical power in a wide range of commercial and industrial applications. However, like any other electrical device, a 3 Phase Electrical Distribution. Rule 2-310 requires the minimum working space around electrical equipment to be based on the Equipment Nameplate Rating rather than the overcurrent setting. The requirements of Rules 2-308 and 2-310 are particular to certain types of equipment (i. equipment with or without draw-out parts).

## Article Content

How to solve the problem of distribution box?

If you're not sure, it's best to contact a professional electrician for repairs.

Preventive measures: Once the fault is resolved, regular inspection and maintenance of the distribution box is recommended to

Outdoor Power Distribution Box Solutions:

Discover how J& HW Group's outdoor power distribution boxes deliver safe, weatherproof, and customizable solutions for modern industrial and

Common Issues and Troubleshooting for 3 Phase Electrical Distribution Boxes

Conclusion Maintaining and troubleshooting a 3 Phase Electrical Distribution Box is crucial to ensuring smooth and reliable power distribution for industrial and event setups. By

Problems and Precautions in the Operation of Distribution Boxes

With the implementation of urban and rural power grid construction and renovation projects, the widespread use of distribution boxes, and the continuous increase in social electricity consumption,

Distribution Boxes Types - The Complete Guide

The power distribution boxes deliver electricity from the main electrical main to other circuits. Several distribution boxes are designed for specific use in

2-9-\* Working space around electrical equipment

Installing the washer/dryer stack in the position shown violates OESC Rule 2-314 which requires the passageways and the working spaces around electrical equipment to be free of obstruction and

What are the common problems of distribution boxes?

The main problems encountered with distribution boxes include installation and layout problems, electrical connection and grounding problems,

Watch for These Electrical Panel Hazards

Electrical panels, also known as breaker boxes or distribution boards, are essential to any electrical system. They distribute electricity to different

What Is a Distribution Box?

Some distribution boxes have a longer cord than others. When choosing a distribution box, make sure the cord is long enough to reach the

Common Issues and Troubleshooting for 3 Phase Electrical

This blog explores common problems associated with 3-phase power distribution boxes and offers practical troubleshooting tips to keep your system running smoothly.

## Power Distribution Equipment

Introduction Power Distribution Equipment is a term generally used to describe any apparatus used for the generation, transmission, distribution, or control of electrical energy. This section concentrates

## STARLINE Distribution Boards

At MOTI Enterprise, we offer modern day STARLINE Distribution Boards that ensure a steady flow of electric power in the whole building with overload protection and other safety features.

## Common Issues with Distribution Boards and How to Address Them

Distribution boards are crucial to any building's electrical system. They distribute electricity to different circuits, ensuring that power flows smoothly and safely throughout the

## The 5 Most Common Power Distribution Safety

Addressing the most common power distribution safety concerns requires a disciplined, technical approach rooted in system-level planning,

## Power Distribution Panel Guide: Components & Functions

Discover the essential components of a power distribution panel and how to select the right panel for your facility's electrical distribution needs.

## Power Distribution Systems

Power distribution networks operate by controlling the flow of electricity from substations to end users, ensuring that demand is satisfied without exceeding

## Power Distribution Box

Be sure that the power distribution box has sufficient power provided to it. Long cable runs can result in a voltage drop, which can be solved by using a heavy gauge wire. Check wires/DIN terminal clasps

## Understanding Distribution Boxes: A Comprehensive

A distribution box, also known as a power distribution box or electrical distribution box, is used to distribute electrical power safely to multiple

## Electrical Panel Clearance | Safety Energy Technologies Area

Insufficient clearance around electrical panels is one of the many electrical hazards that can endanger worker safety. Obstructed access to electrical panels and switches can prevent

### Understanding Power Distribution Boxes: Types, Features, and

Power distribution boxes are vital components in electrical systems, providing safe and efficient electricity distribution across various applications. With numerous types available, including

### How Does a Power Distribution Box Work

Learn how a power distribution box works step by step—from incoming power to circuit protection and smart monitoring—for safe, efficient electricity delivery.

### The Importance of Distribution Boxes in Electrical Systems

Learn more about how distribution boxes play a critical role in the safe and efficient operation of electrical systems.

### ELECTRICAL DISTRIBUTION BOARD FAILURE

An electrical distribution board is a key component of any electrical system, and its failure can cause major problems. In this blog post, we'll explore the causes of

### How to solve and prevent the failure of the distribution

To sum up, qualified construction and maintenance operations, in conjunction with standards and safety measures, can effectively prevent and solve distribution

### Power Distribution Boxes | McMaster-Carr

Choose from our selection of power distribution boxes in a wide range of styles and sizes. Same and Next Day Delivery.

### Efficient Power Distribution Boxes | Nijsha Enterprise

Built with heavy-duty materials, our boxes withstand demanding environments while ensuring consistent power delivery. Our modular designs make expansion and

## Contact Us

For more information, pricing, or custom solutions, please contact us:

Website: <https://www.boxesgaramella-andria.it>

Email: [sales@boxesgaramella-andria.it](mailto:sales@boxesgaramella-andria.it)

Phone: +39 331 584 7291

Address: Via delle Industrie, 15, 20154 Milano, Italy

This document is for informational purposes only. Specifications subject to change without notice.

