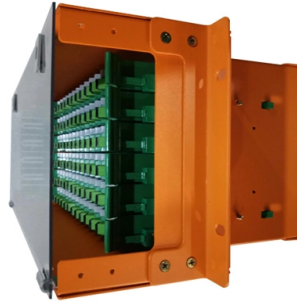


Data Center Interconnection Luxembourg Smart Patch Panel



Overview

This 1U panel is used for 19" standard rack with ERI Cat. 6A Modular jack and fiber connector. Cross-connection setting by dipswitch Dual contact point sensor (Patent pending) RS-485 communication between panel and controller High impact flame retardant plastic module. Push notifications are sent automatically - Intelligent detection of cable types Automatic recording of all "Moves, Adds and Changes" and thus minimisation of errors in the documentation In order to meet the ever-increasing demands for fail-safety and reliability, the basis of an entire network. of patching status for copper networks. Intelligent panels communicate with and receive power from the SmartPatch network scanner, which in turn communicates with SmartPatch software over the network. The system continuously monitors your network, increasing physical layer. Commercial environments have evolved as technology advances, and having a robust cabling infrastructure is crucial for scalability, minimising downtime, and enhancing productivity. Educational institutions are increasingly adopting smart technologies and cloud-based resources, so the foundation of. Belden PatchPro® offers a complete intelligent ready physical layer management system that uses RFID (radio frequency identification) technology for wireless identification of individual patch cords and real-time monitoring of unintended physical changes in network infrastructure. Belden offers a. RiT's RiT's large selection of Cat 8, Cat 7A, Cat 7, Cat 6A and Cat 6 Patch Panels meets all LAN cabling requirements. Our unique products such as RJ-RJ Patch Panels and SMART Voice Blocks are also included in RiT's wide product range.

Article Content

Intelligent Patch Panel < Product

LS SimpleWin™ Intelligent Infrastructure Management System drastically speeds up and simplifies site planning and daily network provisioning, maintenance and security. It also provides comprehensive

Best Practices Guide for Energy-Efficient Data Center Design

Executive Summary This guide provides an overview of best practices for energy-efficient data center design which spans the categories of information technology (IT) systems and their environmental

Smart Patch Panels: Revolutionizing Fiber Optic Network Management

This intelligent system enables remote, software-defined fiber connections that can be reconfigured within minutes, allowing for remote measurement of fiber connections and eliminating

INSTRUCTIONS FOR PREPARATION OF PAPERS

Recent activities address the use of alternative and non-standard interconnection approaches like electrically conductive adhesives or wire interconnection . To ensure an easy and cost-efficient

SMART LC 8-8 Patch Panels

The SMART LC 8-8 Patch Panel is the ultimate solution for managing cross-connect environments in small communication rooms with a limited number of fibers. The SMART LC 8-8 patch panel

Smart Patch Panels & Intelligent Infrastructure Management Guide

Smart patch panels bridge the gap. By embedding micro-switches, LEDs and RFID-tag sensing directly into each port, they elevate structured cabling from static asset to live dataset.

Intelligent Patch Panel System

Intelligent Patch panel system Intelligent Patch Panel System CAN-INTF-10X Technical research shows that almost half of all network problems arise from problems in the physical infrastructure level.

MapIT G2 Smart Patch Panels, Control Panels, Patch Cords ...

MapIT G2 integrates the powerful combination of innovative Smart Patch Panels, user-friendly Master Control Panels and EagleEye™ software to provide real-time tracking and reporting of network-wide

Patch panel | Phoenix Contact

The patch panels are available as versions with the new surge protection and shield current monitoring functions. The integrated surge protection protects the

LuxConnect opens Tier IV data center in Luxembourg

We have direct low latency circuits from Luxembourg to data centers in Brussels, Frankfurt, Kehl, Saarbrücken, Amsterdam, Paris, Strasbourg, London

Intelligent Patching (IP)

Intelligent patching and real-time monitoring with FUTURE-PATCH for patch panels in large networks Automated management and administration of network

SmartPatch™ Fiber LC Panel

SmartPatch Fiber LC Panels are available with RFID antenna strip included or as an intelligent-ready panel without the antenna. SmartPatch Fiber LC Panels are 1RU high, and support 48 fibers with 24

Cat. 6A Patchpanel

FIBRAIN DATA Shielded patchpanels Rapid series fully comply with requirements of cat. 6A (Class EA) and perform transmission of 500 MHz. Are equipped with specific 9 pins angled connectors IDC-LSA

Patch Panels | Copper Frames, RiT, Panel

Our unique products such as RJ-RJ Patch Panels and SMART Voice Blocks are also included in RiT's wide product range. Accommodating fully shielded or

How to Arrange Fiber Optic Patch Panel in Data Center

In modern data centers, where high-speed and high-density connectivity is critical, organizing fiber optic patch panels effectively is essential

Intelligent Patching (IP)

The area of high port density, e.g. in the network racks in data centers is the point where the solution comes in. We recommend to equip the entire patch panels

SmartPatch™ Copper Snap-In-Jack Pane

FEATURES 24-Port 1RU patch panel (supplied without jacks) 19" rack compatible Can be loaded with RFID antenna for monitoring and recording patching status RFID Antenna Kit retrofits to pre-installed

Patch Panels | Data Centre Solutions | CEF

Network patch panels enable flexible connectivity management in professional installations. Our range covers CAT5e to CAT8 standards, complying with

What is a Patch Panel and Why is it Important? The Complete

What is a patch panel? Patch panels are one of the most crucial pieces of equipment located in network closets. Learn more about them here.

Intelligent Patching Systems

This complete & intelligent-ready physical layer management system uses RFID technology for wireless detection of individual patch cords & real-time monitoring

Patch Panels | Copper Frames, RiT, Panel

Accommodating fully shielded or unshielded cables, these easy-to-assemble Patch Panels can be ordered with or without patching switches and with or without

Microsoft Word

SMART LC-MPO 48 Patch Panels Description The SMART LC-MPO 48 Patch Panel is an intelligent, high-density fiber optic patch panel offering the option of real-time physical network management

Intelligent Patch Panel Solution

Infinique's Intelligent Patch Panel Solution for Copper and Fiber Structured Cabling System provides an automated and versatile remote management of ICT infrastructure.

Fiber Optic Patch Panel: 10 Best Options for 2025 Success

Discover the best fiber optic patch panel options for 2024. Learn how to choose, install, and maintain your fiber network for future growth.

Intelligent Patch Panel < Product

SimpleWin™ 24Ports Intelligent Empty Panel for Cat.6 or Cat.6A (Horizontal type) It is available for quick installation cabling by automatic cutting wire tool of individual modular jack.

What is a Patch Panel and Why Do You Need One in Your Data Center?

Inexpensive –Patch panels aren't called "smart" devices because they don't do anything other than allow data communication. This implies that they are incredibly low-cost.

Cat 6A Utp Intelligent Tool Less Patch Panel

Norden Intelligent Cat.6A patch panel provides capabilities of registering patch connections made between corresponding intelligent panel ports. It is Capable of registering patch connections between

Contact Us

For more information, pricing, or custom solutions, please contact us:

Website: <https://www.boxesgaramella-andria.it>

Email: sales@boxesgaramella-andria.it

Phone: +39 331 584 7291

Address: Via delle Industrie, 15, 20154 Milano, Italy

This document is for informational purposes only. Specifications subject to change without notice.

