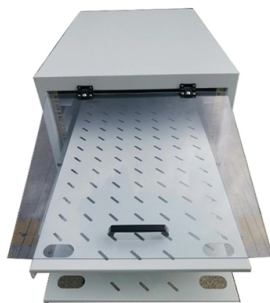


DCS Terminal Box



Overview

The single and double-level arrangement of Weidmuller's DCS marshalling terminal blocks, combined with the provision of the four basic functions (fuse, feed-through, disconnect, and ground), enable users to achieve maximum flexibility when connecting their devices wired in the. The single and double-level arrangement of Weidmuller's DCS marshalling terminal blocks, combined with the provision of the four basic functions (fuse, feed-through, disconnect, and ground), enable users to achieve maximum flexibility when connecting their devices wired in the. Wall jack to connection of a communication unit of the series DCS or DCSF. Modular terminal blocks for Signal marshalling for extremely compact yet clear panel design

Increasingly complex requirements for automation processes and increasing demands in terms of monitoring and recording operational data have led to an ever-increasing number of sensors in the field for. Richmond, VA (April 22, 2024) - Weidmuller USA, a leading provider of smart industrial connectivity and automation products and solutions headquartered in Richmond, Va., introduces new Klippon® Connect W2C and W2T Range signal wiring and signal marshalling terminal blocks that offer flexible. NATUS can provide the system solution in switchgear construction for your process control technology requirements. PCS 7 for control and are looking for system cabinets to extend a standard DCS solution, NATUS will provide you with a modular, flexible system concept. We can. The Control Engineering Product of the Year* program highlights some of the best new control, instrumentation, and automation products as chosen by Control Engineering's print and online subscribers. Qualified subscribers are asked to select products based on technological advancement, service to. Wall jack to connection of a communication unit of the series DCS or DCSF.

Article Content

Terminal Boxes | McMaster-Carr

Choose from our selection of terminal boxes, including over 4,300 products in a wide range of styles and sizes. Same and Next Day Delivery.

Wall-surface mount terminal box for DCS|Honeywell Building Automation

Wandanschlussdose zum Anschluss einer Sprechstelle der Serie DCS oder DCSF.

Marshalling Cabinet Explained: Design, Wiring, FAT,

A complete technical guide on marshalling cabinets covering design, wiring practices, cross-wiring, FAT, SAT, troubleshooting, standards, and

DCS wiring connection from field to control room

Say we have hundred number of Junction boxes installed, that means we have hundred number of main cables are coming from field to control room. so practically it not possible to directly wire ...

Function and Components of DCS

DCS functions as a tool to control a loop system where one loop can perform several control processes. Serves as a substitute for manual and

UNDERSTANDING TERMINAL BLOCKS USED IN DISTRIBUTED

Terminal blocks are used to increase safety and circuit integrity by isolating, fusing, grounding, and otherwise protecting components in an electrical circuit. Standard function for terminal blocks used in

DCS Layout Basics 1749955368

DCS_Layout_Basics_1749955368 - Free download as PDF File (.pdf), Text File (.txt) or read online for free. The document provides an overview of a Distributed

DCS cabinets

NATUS can provide the system solution in switchgear construction for your process control technology requirements. If you are using e.g. PCS 7 for control and are

Quick Identification of AI/AO/DI/DO Terminal Positions

Although cabinet codes and terminal labels differ across vendors, the principles and patterns above are broadly applicable to mainstream DCS/SIS platforms. Share

Wall-surface mount terminal box for DCS

583307 Wall jack to connection of a communication unit of the series DCS or DCSF.

DeltaV CTO Smart Junction Box

The DeltaVTM CTO CHARM Smart Junction Boxes provide an off-the-shelf solution for faster project execution and reduced installation costs. SJBs are factory tested products and ready for installation

Signal marshalling

Our modular terminal blocks for signal marshalling enable extremely compact yet clear panel design. The additional signals for automation can be easily connected and processed.

Terminal block series for DCS marshalling applications

Weidmuller's new WMF 2.5 terminal block series includes clearly identified, black fuse terminals that are equipped with a robust pivoting fuse holder. This feature enables quick and easy

How to Host a DCS Server

One of our favorite games is DCS World, a flight simulator with highly detailed fighter jets and realistic flight models and combat systems. In this

Wall-surface mount terminal box for DCS|Honeywell Building Automation

Learn all about the Esser Wall-Surface Mount Terminal. Click to find product details, documentation, ordering info and more.

DCS and PLC Flow Diagram | PLC Operation | DCS

PLC Connection between field Instruments, Junction Box, Marshalling cabinet, System Cabinet and Human-Machine Interface. Study PLC Operation &

DCS Marshalling Terminal Blocks

This new series is specifically designed for the challenging demands of DCS marshalling applications- notably to simplify wiring, reduce required cabinet

UKK160 DIN Rail Terminal Block Box Single Pole

Product Description [Single Pole Terminal Junction Box] : Rated at 1000v ac dc and 160a, supporting multiple outputs, ideal for distribution and high voltage cabinets.

Inside a DCS Rack: Understanding the Different Modules

A DCS rack, also known as a chassis or cabinet, is the physical enclosure that houses the core electronic components of this system. It's more than just a metal

DCS Training 2

DCS Training 1 - Field Instruments to Junction Box | Branch & Main Cables Two Wire Transmitter 4 to 20 mA Explained in Telugu

Business Standard

Hier sollte eine Beschreibung angezeigt werden, diese Seite lässt dies jedoch nicht zu.

Products : Marshalling Box or Terminal Junction box :

Marshalling Boxes/Kiosks/Junction boxes are used in substation switchyards provided with Terminal Blocks to which control cables are connected.

WMF 2.5 Multi-Functional Terminal Block Series For DCS Marshalling

! Advantages: Minimize wiring failures with pre-assembled cables and plugs Reduced complexity with one terminal design (WMF 2.5)

Instrumentation Marshalling cabinet

The marshalling cabinet acts as an interface between the system cabinet and field junction boxes. The main cables are laid from the field junction boxes to the

Pc USB button box 29 functions for DCS including

Pc USB button box 29 functions for DCS including labels sheet, 12 toggles with silicone covers, back-lit button and encoders

DCS Server

Elevate your flight simulation experience with our top-tier server rental services tailored specifically for Digital Combat Simulator (DCS server) enthusiasts. Pick

DCS Marshalling Terminal Blocks

The single and double-level arrangement of Weidmuller's DCS marshalling terminal blocks, combined with the provision of the four basic functions (fuse, feed-through, disconnect, and ground), enable

Contact Us

For more information, pricing, or custom solutions, please contact us:

Website: <https://www.boxesgaramella-andria.it>

Email: sales@boxesgaramella-andria.it

Phone: +39 331 584 7291

Address: Via delle Industrie, 15, 20154 Milano, Italy

This document is for informational purposes only. Specifications subject to change without notice.

