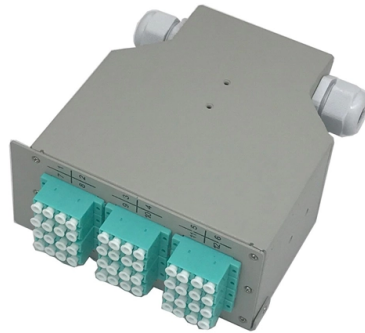


# Cable trays are formed in one piece



## Overview

Perforated Cable Tray are single piece construction that are either ventilated or solid bottom. They are used primarily with power cables, control cables. They come in Light, Medium & Heavy Duty depending on client's specifications & site conditions. Cable tray systems are engineered support structures designed to route, support, and protect insulated electrical cables used for power distribution, control, instrumentation, and communication. They are especially useful in situations where changes to a wiring system are anticipated, since new cables can be installed by. A cable tray system is a unit assembly of sections and fittings that forms a rigid structural system used to securely fasten or support cables and wiring. Fittings can, on the one hand, be used for horizontal or vertical changing of the routing direction or, on the other, to change the height or width of the. -piece tray istypically used in applications where visual esthetics are important.



## Article Content

Cable Tray, Cable Bus, Wire Mesh Cable Trays | MP

Throughout these changes one thing has remained constant - the Husky drive to be the most reliable, highest quality, cost-effective and innovative cable tray

What are Cable Trays & Different Types of Cable Trays

Learn what cable trays are & explore the various types, benefits, and purposes. Gain insights into how electrical cable trays can revolutionize

Wire Duct, Raceway & Tray

Wire Duct, Raceway & Tray Protect your employees and equipment from harm by using wire ducts, raceways and trays for cable containment and organization. Easily integrated into existing systems,

GUIDE CABLE TRAYS TECHNICAL

In accordance with its continuous improvement policy, Legrand reserves the right to change the specifications and illustrations without notice. All illustrations, descriptions and technical information

Cable Tray Ladder Trunking Wire Basket Installation

Resources For Electrical & Electronic Engineers Cable Tray Ladder Trunking Wire Basket Installation Guidelines What Are Cable Trays? An assembly of

Cable Tray Technical Guide A practical guide to product selection and ...

Cable Tray Technical Guide A practical guide to product selection and installation This guide for engineers and installers has been developed by ABB as a practical reference regarding cable tray

Cable Tray Technical Guide A practical guide to product selection and ...

Cable tray is considered to be a system. It must provide continuous support for cables, and the electrical continuity of the cable tray system must be maintained.

CABLE TRAY SYSTEMS GUIDE

Some applications may require the cable tray to support the weight of a single, dead object in addition to the cable loads. Specifications typically require this to be applied at the midpoint of the span between

What Are Cable Trays and How Do They Work?

A cable tray system forms a structural framework used to support electrical cables, differentiating it from traditional conduit piping that fully encloses wires.

Types of Cable Trays: Ladder, Perforated, Basket,

Cable trays support insulated electrical cables in industrial and commercial settings. There are several types of cable trays, including ladder,

Guide to cable support systems

The mesh cable trays are suitable for the installation of power cables and cables in various areas of application. The grid spacings mean that cables can be inserted and run out in various directions.

One-piece tray

One-piece tray Selection guide Ventilated trough Formed from a pre-punched sheet to produce a one-piece ventilated trough Available in aluminum, pregalvanized steel, hot-dipped galvanized steel and

7 Types of Cable Trays: How to Choose the Right One

A channel cable tray is a compact, single-piece tray system with a narrow base and raised side flanges. Unlike ladder or trough trays, channel

Cable Trays

Cable trays are systems that distribute bundles of insulated electrical cables from power supplies to electrical equipment, consisting of metallic trays supported from structures like walls and ceilings.

100+ Essential Questions Answered About Cable

Discover over 100 expert answers about cable trays, covering key topics like material selection, load capacity, installation methods, and maintenance.

Cable Tray Systems: A Complete Guide to Types

A cable tray system is a unit assembly of sections and fittings that forms a rigid structural system used to securely fasten or support cables and

People Inc.

People Inc. is America's largest digital and print publisher. Learn about career opportunities, leadership, and advertising solutions across our trusted brands

Cable tray

In the electrical wiring of buildings, a cable tray system is used to support insulated electrical cables used for power distribution, control, and communication. Cable

Types of Cable Trays – Advantages, Applications and Sizes

Explore the types of cable trays, their advantages, applications, and standard sizes. Learn how they improve cable management and support various industries.

Types of Cable Trays: Ladder, Perforated, Basket,

Explore all types of cable trays—ladder, perforated, basket, solid, and channel. Learn their uses, materials, pros, cons, and key differences.

Cable Tray System| What is Cable Tray | Which Types

Perforated Cable Tray are single piece construction that are either ventilated or solid bottom. They are used primarily with power cables, control cables. They

Cable tray

Several types of tray are used in different applications. A solid-bottom tray provides the maximum protection to cables, but requires cutting the tray or using fittings to enter or exit cables. A deep, solid enclosure for cables is called a cable channel or cable trough. A ventilated tray has openings in the bottom of the tray, allowing some air circulation around the cables, water drainage, and allowing some dust to fall through the tray. Small cables may exit the tray through

Crackhead/pass.txt at master · moimikey/Crackhead ·

How to create a web form cracker in under 15 minutes. - moimikey/Crackhead

Understanding cable trays

Cable trays are available in a wide variety of sizes, styles (including ladder, ventilated trough, ventilated channel, solid bottom and similar structures) and

Engineering:Cable tray

In the electrical wiring of buildings, a cable tray system is used to support insulated electrical cables used for power distribution, control, and communication. Cable

What are the main components of a cable tray?

What Are the Main Components of a Cable Tray System? The main components of a cable tray system include tray sections, fittings, supports, and

What Is A Cable Tray? 5 Types Of Cable Trays

A cable tray is a structural system used to support and manage electrical cables in various settings, such as industrial, commercial, and residential environments.

## Contact Us

For more information, pricing, or custom solutions, please contact us:

Website: <https://www.boxesgaramella-andria.it>

Email: [sales@boxesgaramella-andria.it](mailto:sales@boxesgaramella-andria.it)

Phone: +39 331 584 7291

Address: Via delle Industrie, 15, 20154 Milano, Italy

This document is for informational purposes only. Specifications subject to change without notice.

